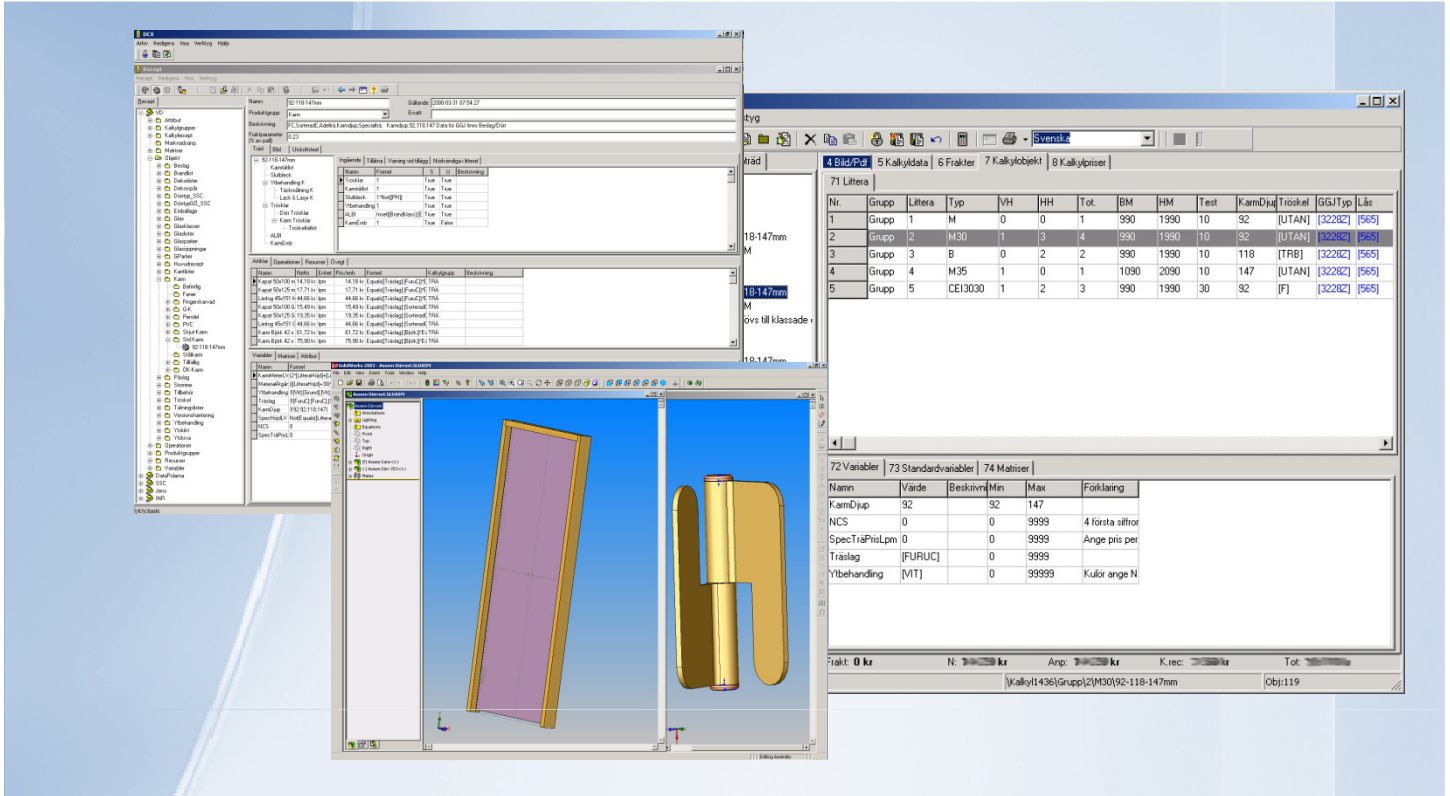




A configurator is used to determine the framework for how a product can be assembled. The output from DCX++ includes price, production time, CAD drawing, lists of items, restrictions etc.



Simplifies production planning

Immediately after a salesman has made a cost estimate and submitted a quotation to the customer, details are available on material usage, manufacturing time, cost price, customisations, availability etc.

Easier for salesmen

The salesman can inform the customer immediately as to the feasibility of any requested customisations to the product, as well as the price and any other costs/effects such as freight, delivery dates etc. that the configuration might involve. A 3D model of the product is also available via SolidWorks.

Dynamic structures

As opposed to most other business systems, the configuration manages dynamic structures that contain

- Material
- Operations
- Resources
- Attributes (such as indicating delivery dates)
- Production stages
- Restrictions
- 3D-drawing
- Others

Flexible

DCX++ can be used to configure all types of products where the customer can customise dimensions, accessories etc. These products might include doors, cars, caravans, trailers, boats, industrial machinery etc.

DataPolarna AB

Vretgatan 5, 931 33 SKELLEFTEÅ
 Telefon +46 (0)910-120 90
 Mail info@datapolarna.se
 Web http://www.datapolarna.se

